

4
5 THRU 8

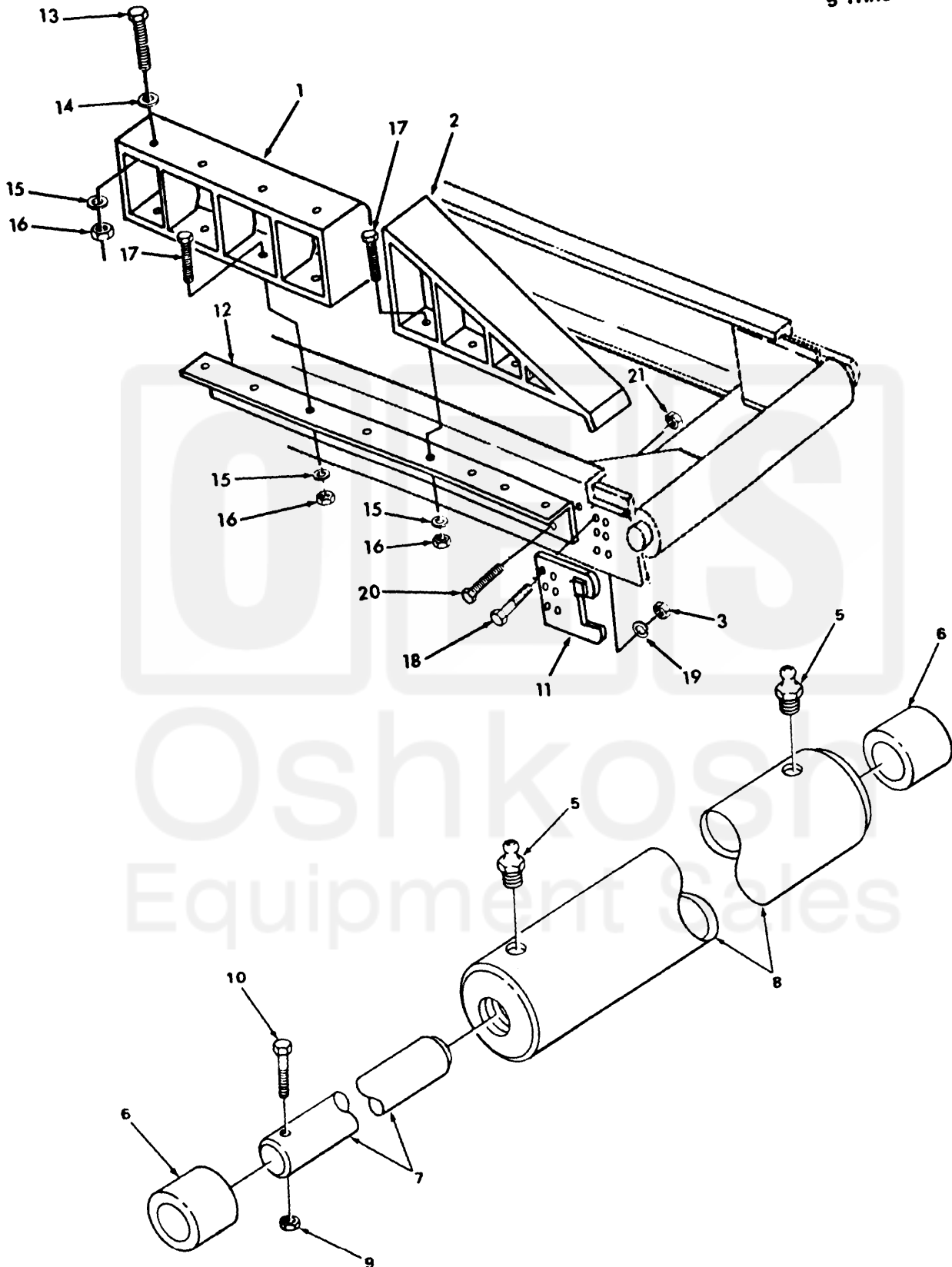


FIGURE 223. TAIL ROLLER ASSEMBLY AND RAMPS.

Current part is item (2) on diagram. Available at www.oshkoshequipment.com

SECTION II (1)	ITEM (2)	SMR (3)	FSCM (4)	PART NUMBER	DESCRIPTION AND USABLE ON CODE (UOC)	QTY (6)
TM9-2320-273-24P						
GROUP:1501 FRAME ASSEMBLY						
FIGURE 223. TAIL ROLLER ASSEMBLY AND RAMPS						
1	PAOFF	19207	12370058	SPACER, FIFTH WHEEL		1
2	PAOFF	34623	M/32-20087	RAMP ASSEMBLY, FIFTH RH		1
				UOC:U22,U26		
2	PAOFF	19207	12370051-1	RAMP ASSEMBLY, FIFTH LH		1
				UOC:U22,U26		
2	PBOFF	34623	M/32-20096	RAMP ASSEMBLY, FIFTH RH		1
				UOC:U22		
2	PBOFF	34623	M-D32-20095	RAMP ASSEMBLY, FIFTH LH		1
				UOC:U22		
2	PBOFF	34623	M-D207-20008	RAMP ASSEMBLY, FIFTH LH		1
				UOC:U21		
2	PBOFF	34623	M/207-20009	RAMP ASSEMBLY, FIFTH RH		1
				UOC:U21		
3	PAOZZ	34623	MB219B20000	NUT, PLAIN, EXTENDED		8
				UOC:U22,U26		
4	PBOFF	58864	11004	ROLLER ASSEMBLY, TAI		1
				UOC:U22,U26		
5	PAOZZ	96906	MS15003-1	.FITTING, LUBRICATION		1
				UOC:U22,U26		
6	PAOZZ	34623	81609	.BEARING, SLEEVE (OLD)		2
				UOC:U22,U26		
6	PAOZZ	96906	MS35771-207	.BEARING, SLEEVE		2
				UOC:U22,U26		
7	PBOZZ	19207	12370106	.SHAFT, STRAIGHT		1
				UOC:U22,U26		
8	PBOZZ	19207	123701013	CYLINDER, ROLLER		1
				UOC:U22,U26		
9	PAOZZ	80205	NAS1408A6	NUT, SELF-LOCKING, HE		1
				UOC:U22,U26		
10	PAOZZ	11862	9430725	SCREW, CAP, HEXAGON		1
				UOC:U22,U26		
10	PAOZZ	34623	M-C25-20001	SCREW, CAP, HEXAGON		8
				UOC:U22,U26		
11	PBOZZ	19207	12370055-1	BRACKET LH		1
				UOC:U22,U26		
11	PBOZZ	19207	12370055-2	BRACKET RH		1
				UOC:U22,U26		
12	PBOZZ	34623	MD10-20056	BRACKET, ANGLE LH		1
				UOC:U22,U26		
12	PBOZZ	34623	M/D10-20057	BRACKET, ANGLE RH		1
				UOC:U22,U26		
13	PAOZZ	96906	MS90727-187	BOLT		10
14	PAOZZ	96906	MS27183-23	WASHER		10
15	PAOZZ	96906	MS35338-51	WASHER, LOCK		10
16	PAOZZ	96906	MS51968-24	NUT		10
17	PAOZZ	96906	MS90727-186	BOLT		8
18	PAOZZ	96906	MS90727-191	BOLT		8

Current part is item (2) on diagram. Available at www.oshkoshequipment.com